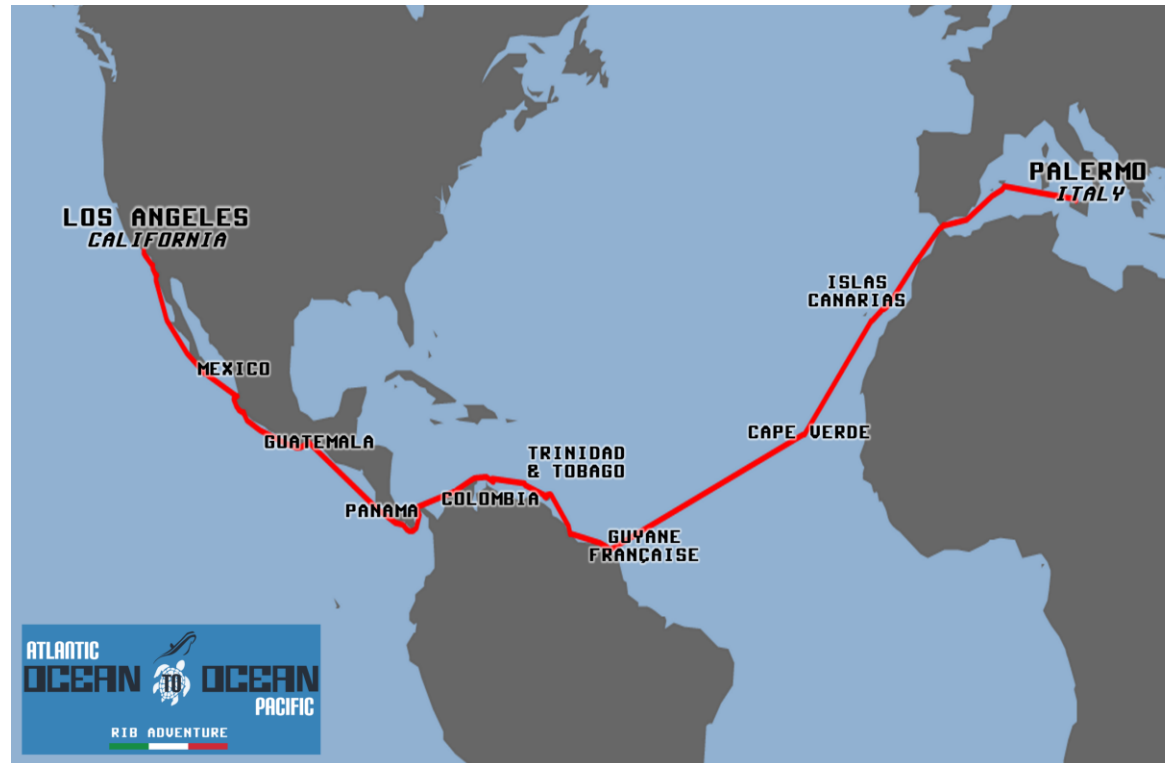


RISULTATI OTTENUTI DAI CAMPIONAMENTI DELLE ACQUE RACCOLTE DA SERGIO DAVÌ DURANTE L'ULTIMA TRAVERSATA

OCEAN TO OCEAN RIB ADVENTURE

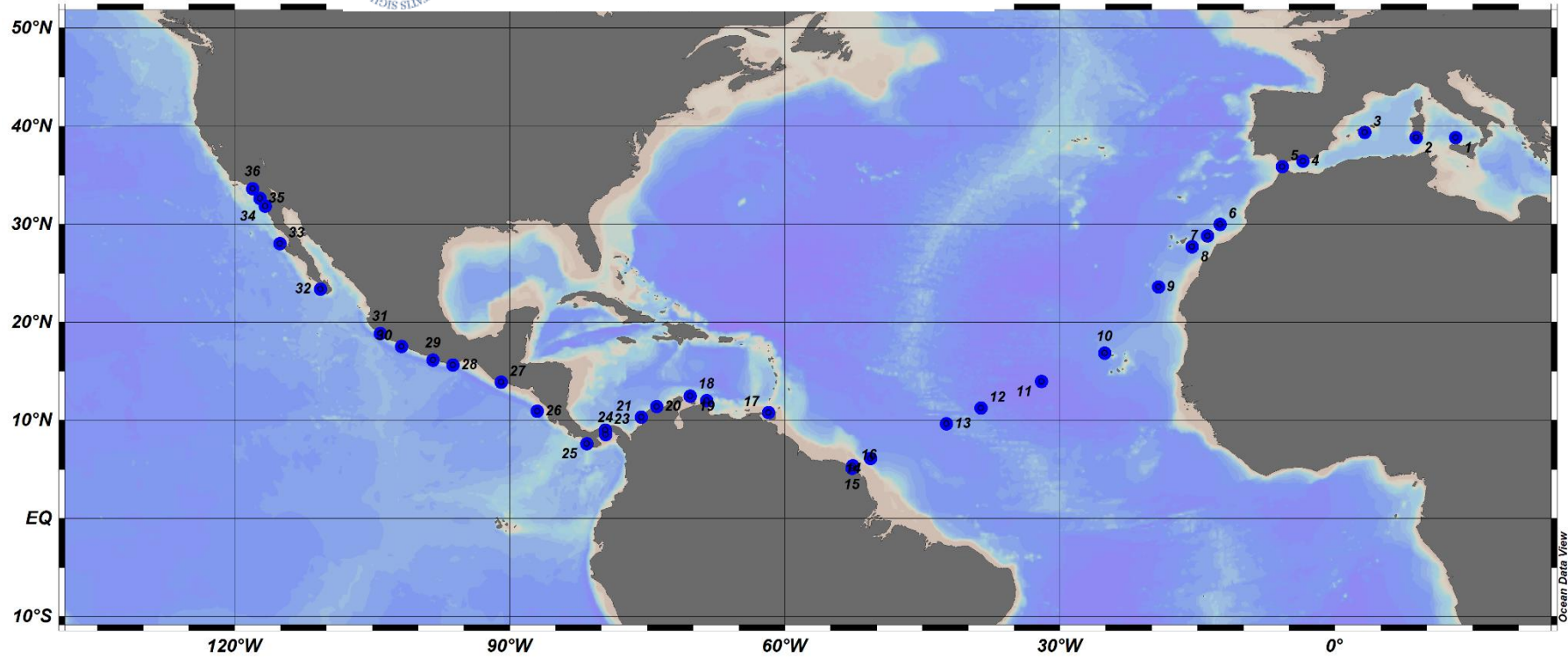


Da Palermo a Los Angeles in gommone
e analizzate da ATeN Center dell'Università di Palermo
Resp. [Prof. Mariano Licciardi](#)



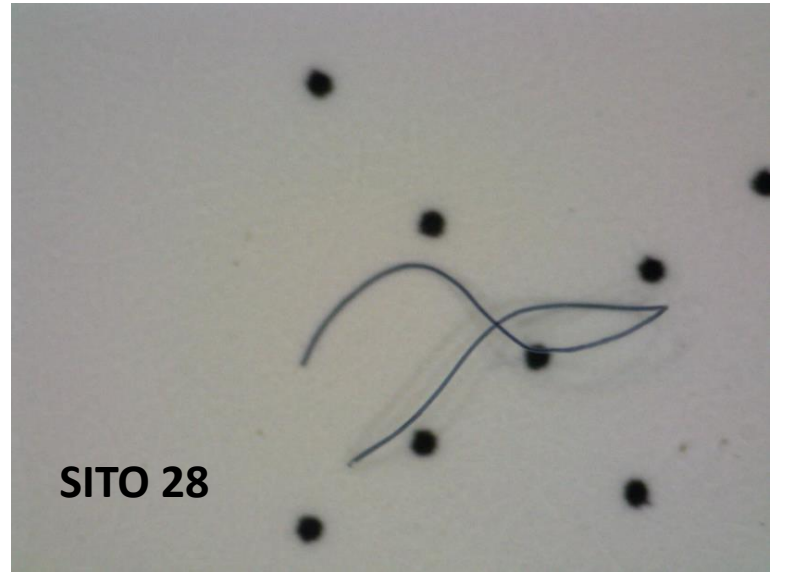
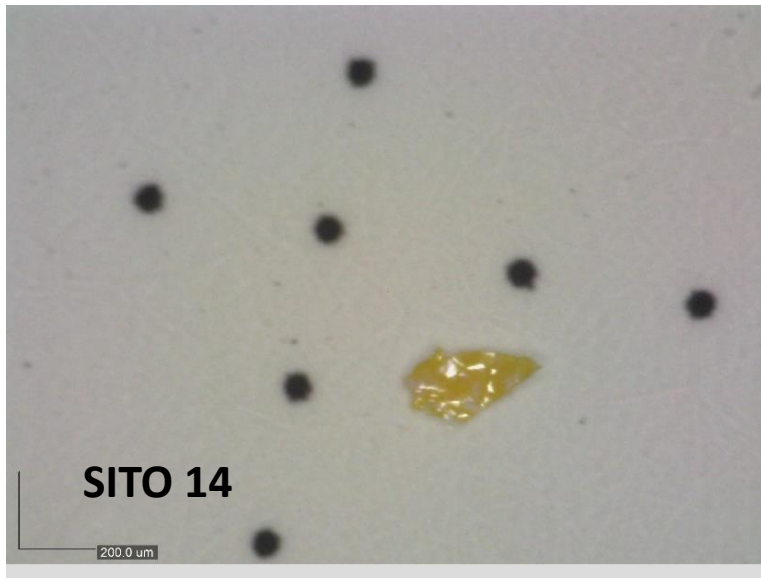
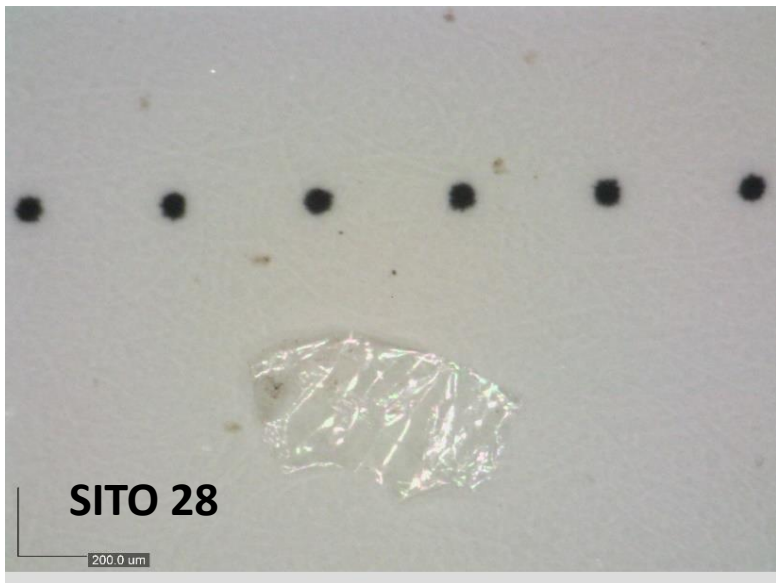
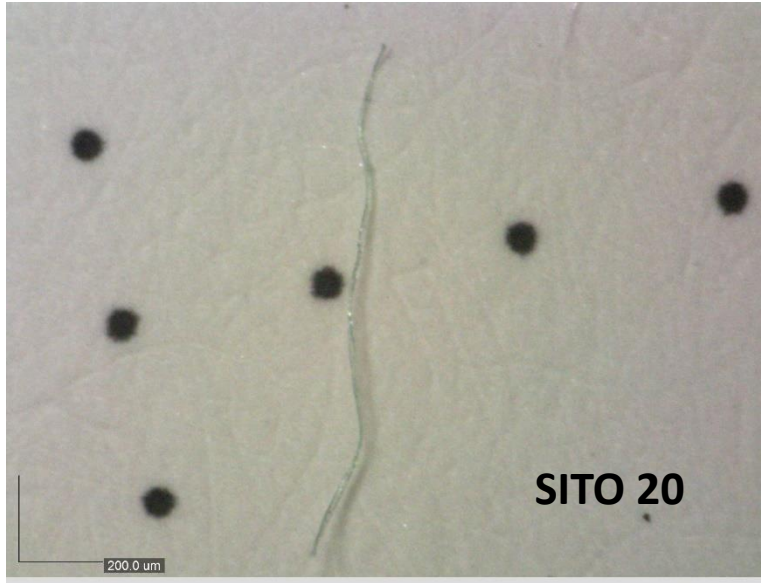
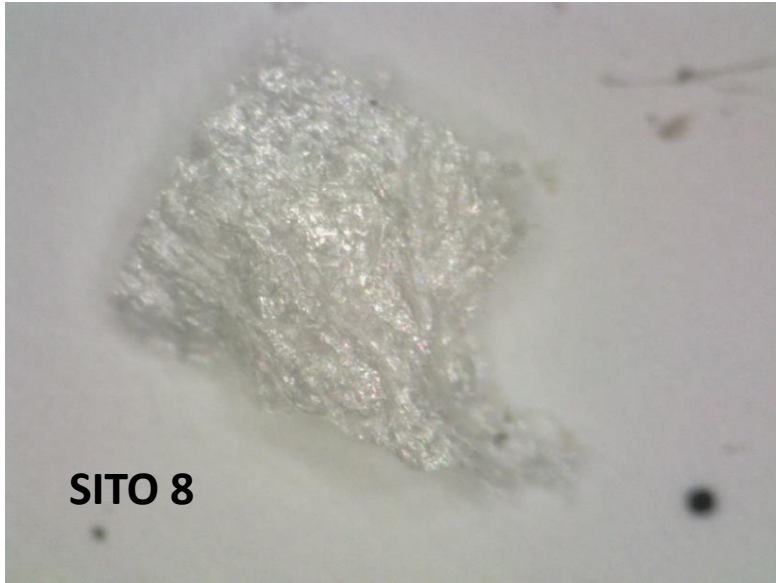
Università
degli Studi
di Palermo

ATeN Center
ADVANCED TECHNOLOGIES NETWORK CENTER



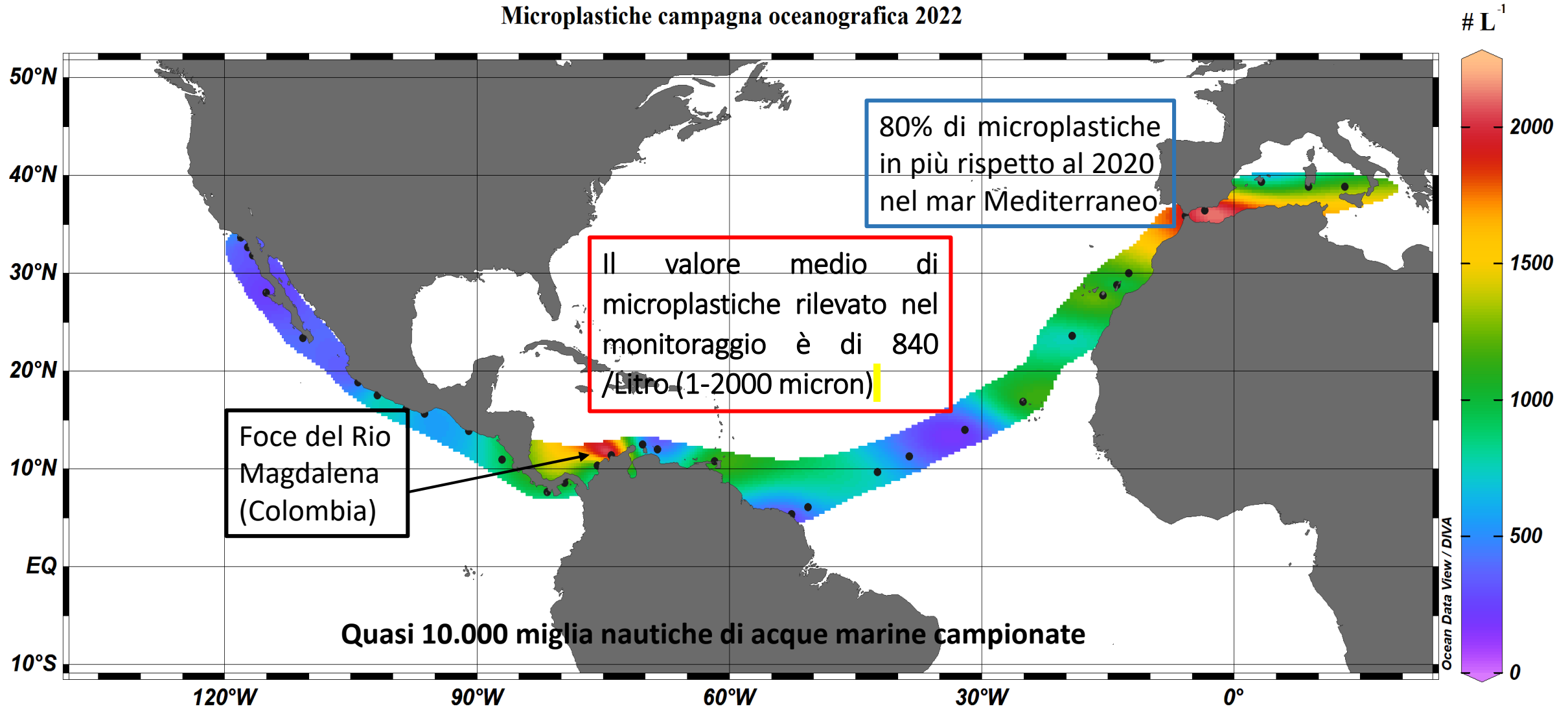
Ocean Data View





Identificazione di punti caldi

Microplastiche campagna oceanografica 2022



Università degli Studi di Palermo

ATeN Center
ADVANCED TECHNOLOGIES NETWORK CENTER

SERGIO DAVI
ADVENTURES